

This page "The pool window provides a visual connection to the upper pool deck," says architect Nicholas Murray of the pavilion separated from the main house by the courtyard. Terrazzo table from The Plutonic Furniture Company. 'Lerod' chairs from Stylecraft. Opposite page Vintage pieces in the study include a Fornasetti chair (on the right) and a mirror from 1stdibs. Rug from Cadrys. Lasvit Neverending Glory 'Prague Estate Theatre' pendant light from Living Edge.

LIT FROM WITHIN



Bathed in light from a soaring oculus, this home is an elegant expression of Haussmann-inspired design in the heart of Melbourne.

Words **CARLI PHILIPS** Photography **ARMELLE HABIB** Styling **SIMONE HAAG**





This page Friends & Founders 'La Pipe' lounge chairs from Fred International continue the study's splash of plum into the living room. Coffee table from Hugh Lane. Ceramics on coffee table from Pèpète. Minotti 'Alexander' sofa from De De Ce. Rug from Cadrys. *Never have made it* (behind chairs) and *Saturday night live* artworks by Jasper Knight from James Makin Gallery. Listone Giordano 'Réserve Traccia' floorboards in Siena from Winspear. Vintage floor lamp. Opposite page, from top Strong black tones highlight the kitchen and include Zimbabwe Black granite for the benchtops and island bench from Gladstone Granite. 'Chair No.1' iron and buffalo leather chairs by J.M. Szymanski from 1stdibs. Vola tapware in brushed black chrome and an e15 'Span' pendant light from Living Edge. Elba marble splashback from Artedomus. Yellow sculptures by Basil Papoutsidis from James Makin Gallery. A commissioned artwork by Antonia Mrljak fills a wall in the dining room. Baxter dining table and Apparatus 'Twig 5' pendant light, both from Criteria. Featherston 'Scape' dining chairs from Grazia&Co. 'Shigure' standing shelf by Sozou Studio. Glass vases on table from Boyd Blue. Ceramics from Modern Times.



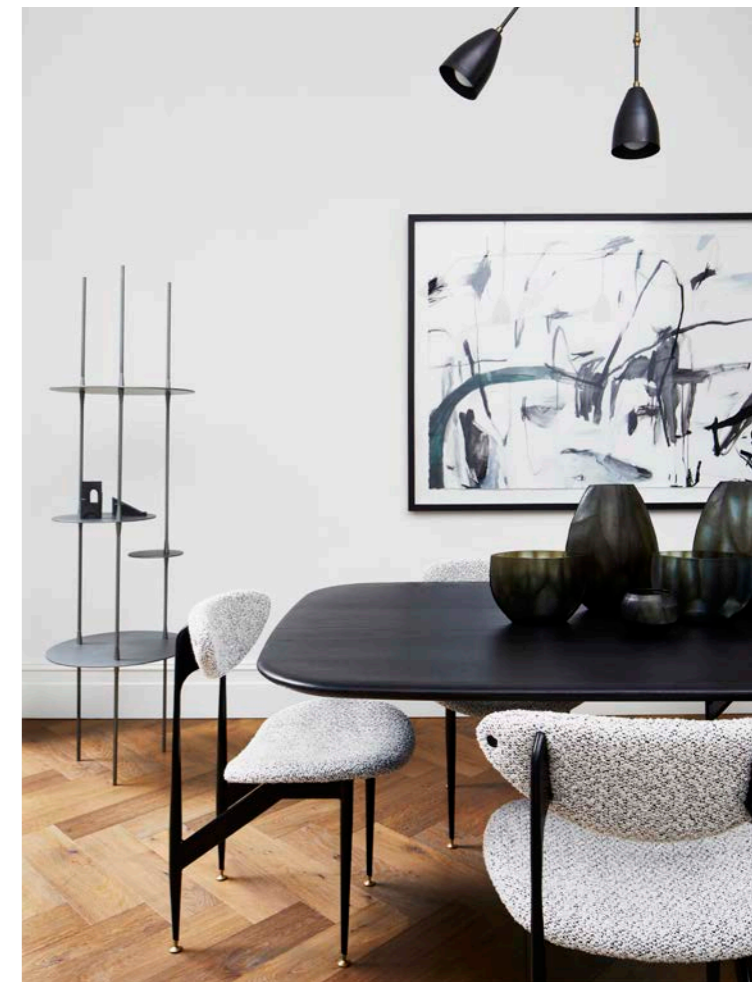
With its tree-lined boulevard location, traditional parquet flooring and effortless European pieces, this home in East Melbourne has definite Parisian vibes. It's an atmosphere owner Liz Hall was vying for at the newly renovated house that she shares with her partner Gavin Wright. "I love large, Haussmann-style apartments with their parquet flooring and classic detailing," says Liz. "I wanted there to be a feeling of height and space."

In a quiet location yet close to Melbourne's CBD, the circumstances in which this house came to be were fortuitous. The discovery of the 1800s house coincided with Liz's commencement of an interior design degree. A lawyer by trade, she had done a series of casual short courses over the years, but bit the bullet in 2018 for something more formal.

Around the time of enrolment, the couple came across what was to become their forever home. Liz decided to defer in order to devote her time wholeheartedly to the renovation. What followed proved to be the ultimate on-the-job 'work experience' – an immersion that spanned site meetings, sourcing materials, selecting finishes and fixtures.

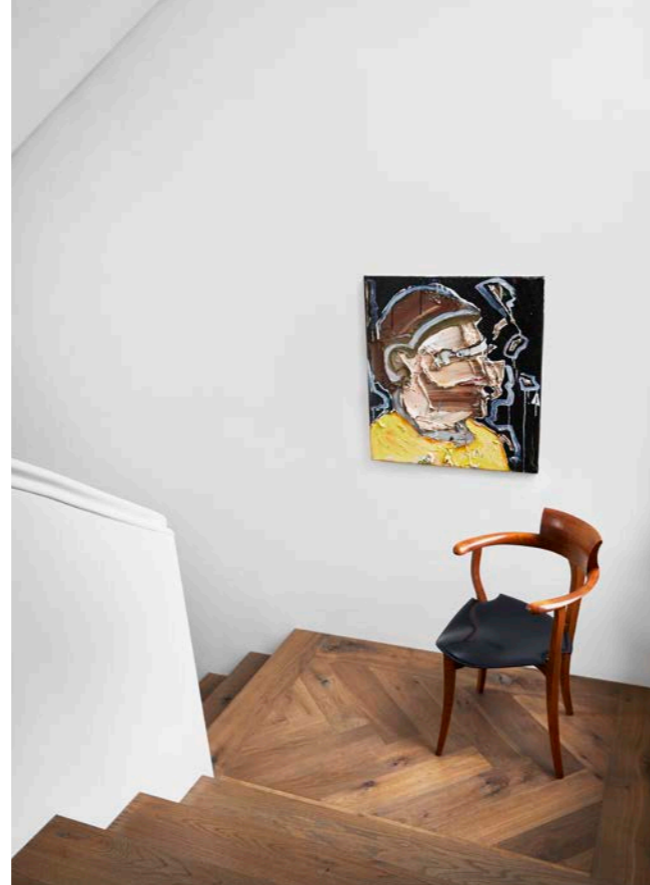
The house was largely derelict and required major work. Liz and Gavin engaged Nicholas Murray of Nicholas Murray Architects, who they had worked with on their previous property, a big industrial-style warehouse conversion with lots of built-in furniture. "I told Nicholas that we wanted to do something completely different this time," says Liz. Aside from the period facade, the house was beyond repair. "We wanted to create something more contained, with an internal look of restrained ornateness and detailing that was more European as opposed to Melbourne's typically dark, Victorian-era look," says Nicholas.

He applied subtle decorative elements to the new voluminous spaces by way of slim cornices, panelled doors and marble fireplaces. To bring in extra light, Nicholas added steel-framed windows, a series of pared-back colonnaded arches and a central oculus with a perimeter frame that links back to the balustrade edging on the staircase. »



These pages Owner Liz Hall's inspiration for the soaring oculus in the living room came from the Pantheon, and steel-framed glass doors provide a visual connection to the pool pavilion. Minotti 'Alexander' sofa from De De Ce. Coffee table from Hugh Lane. Ceramics on coffee table from Pépité. Friends & Founders 'La Pipe' lounge chair from Fred International. Rug from Cadrys. Artwork by Jasper Knight. Vintage floor lamp. Vintage bar cart from Smith Street Bazaar. Elba marble on the wall from Artedomus. Serge Mouille swing arm wall lamp and 'Chair No.1' chair by J.M. Szymanski, both from 1stdibs.





« A paved rear courtyard separates the house from a new, freestanding double-storey pavilion. The open-air space is dedicated to hanging out with friends and also for fitness. Catering to Liz and Gavin's cycling hobby, the area was designed so that the couple could set up their training bikes in front of the television during the colder months. They were initially reticent about installing a plunge pool because of the maintenance required, but Nicholas designed it with high-end technology for complete automation. "The whole set-up has seen some heavy use in recent months," says Liz, referring to Melbourne's strict COVID-19 lockdowns. At 20 tonnes of weight in the air, the aerial pool was structurally challenging but the effect provides a visual connection from the lower courtyard to the upper deck.

Liz wanted a very specific palette of cool blues and greys with minimalistic stone silhouettes, but she was cautious of the colours being too cold. Lining the floors in hand-laid French oak parquetry not only provided visual and textural interest but added an incredible warmth to soften the more reserved hues.

She worked closely with interiors expert Simone Haag to curate and style furniture, objects and art. The brief was to create a home that seamlessly absorbed vintage and modern elements equally. "The home's decorating framework is one of restrained elegance," says Simone, who "cast a wide net" when it came to sourcing everything from big-ticket furniture to accent tables and chairs, ceramics and lamps. "At no point is there an obvious change in style. One of the overarching ideas was to place both traditional and contemporary pieces side by side."

Uncluttered and carefully placed, it's a pared-back approach that "uses negative space to highlight the objects' individuality". Mid-century vintage pieces, Australian artworks and standout lighting from Apparatus sit alongside sentimental antique vessels, bronze statues and fresco-inspired paintings collected on Liz and Gavin's travels through Morocco, India and New Mexico.

"At the moment they assume an even more important role, given we don't know exactly when we will be able to travel again," says Liz. "These items not only decorate our home but are memory triggers which take us to places we've enjoyed together." ■

@studioapercu; nma.net.au; simonchaag.com.au



This page "Period buildings are generally dark and gloomy," says architect Nicholas Murray. "We introduced large steel-framed windows to open up the traditional spaces, such as the master bedroom." 'Arctic Pear' chandelier and 'Scorpion' wall light from Ochre. Custom bed designed by Liz Hall. Bed linen and throw from Hale Mercantile Co. Sculpture by Zoe Amor. Artwork by Robert Malherbe from James Makin Gallery. **Opposite page, clockwise from top left** In the main entry, Mingardo 'Be-Lieve' credenza from Hub with a table lamp by Studio Henry Wilson. 'Bone Chair 01' by Loïc Bard from Radnor. Apparatus 'Triad 9' pendant light from Criteria. A painting by Toby Raine from James Makin Gallery guides you down the main home's stairs. The Wall&decò wallpaper in the master ensuite features a tree motif. The pattern ties in with sculptures that Liz commissioned in the courtyard, which have an arboreal form. 'Etruscan' bath from Albion Bath Company. Elba marble for the floor and vanity from Artedomus. 'Triangolo' steel chair from Framo.

SPEED READ

» Liz Hall chanced upon this house while studying a formal associate degree in interior design – renovating it proved to be the ultimate on-the-job learning experience. » Liz and her partner Gavin had renovated a big warehouse before, but for this home they wanted something completely different. » They enlisted the same architect, Nicholas Murray, to create a home inspired by traditional Haussmann-look Parisian apartments. » A central feature of the design is the huge oculus that drenches the interiors in light. » Classic elements were celebrated in the form of cornices and panelled doors. » Interior designer and stylist Simone Haag worked alongside Liz to curate a selection of vintage and modern furniture, lighting and accessories. » A paved courtyard separates the house from a new, freestanding double-storey pavilion, which contains a transparent 5.5 x 3-metre pool and a dedicated space for the couple to train for their cycling hobby.